



PAM-COMFORT

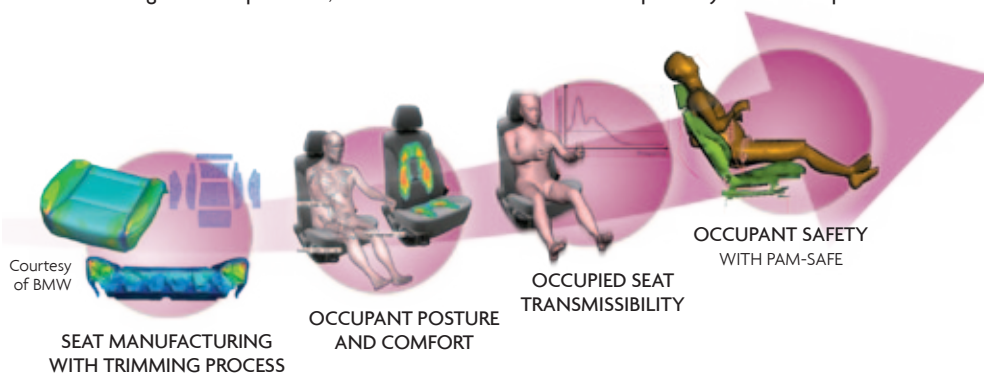
A SIMULATION-BASED DESIGN SOLUTION FOR VIRTUAL SEAT PROTOTYPING

KEY BENEFITS

- **Reduce cost and save time**
 - Drastically reduce the number of trial-and-error loops on physical seat prototypes in all development phases.
 - Identify troubles very early, before building physical prototypes.
 - Anticipate the impact of small design changes and of production variations.
- **Improve seat quality and performance**
 - Predict the impact of innovative, light-weight materials on the overall seat performance.
 - Assess a large number of comfort innovations, quantify and validate quickly and very early.
- **Improve synergies within a team or with suppliers and customers**
 - Specify and evaluate the seat performance criteria before building physical prototypes.
 - Manage earlier and more easily conflicting requirements related to seat design (comfort, safety, manufacturing, weight and size reduction...).

PAM-COMFORT is a Simulation-Based Design solution dedicated to Virtual Manufacturing and Virtual Testing (static and dynamic) of the soft parts of a seat, through chained simulations.

Using a digital mock-up of the seat and the occupant, PAM-COMFORT predicts detailed information related to seat design and manufacturing, taking into account the complex physics of materials, the multiple contacts, and the time-dependant processes. The physical parameters resulting from each stage of the chain (positions, deflections, strains and stresses) are used as an input to the following one, in order to ensure a high level of precision, whatever the seat and the anthropometry of the occupant.



A USER-FRIENDLY INTERFACE

PAM-COMFORT Graphical User Interface is dedicated to Virtual Seat Manufacturing and Testing and handles all the stages of the simulation chain within a unified seat design environment.

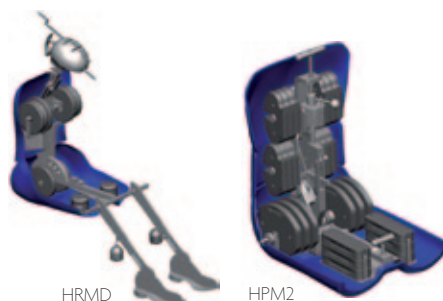
SEVERAL FE SOLVERS

PAM-COMFORT relies on Finite Element Solvers (SMP/DMP) for the simulation of the cushion manufacturing process (trimming), the occupant positioning process and the transmission of the vehicle vibrations to the occupant through the seat.

PAM-COMFORT is fully compatible with PAM-CRASH and PAM-SAFE, and can provide the exact initial conditions for crash simulation, related to the seat and the occupant.

A LIBRARY OF OCCUPANTS

A library of dummies (HPM1, HPM2 and HRMD) and human models (5th, 50th and 95th percentile from various populations), with automated positioning/scaling tools is available.



5th, 50th and 95th percentile human models with updated anthropometry (v2009) developed in partnership with Hyundai Motor Company



“Using PAM-COMFORT, within a short period of time, and with few resources, we were able to deliver a new seat design meeting our objectives.”

Jérôme Makala, Head of Comfort and Safety Research Department, Renault Group

APPLICATIONS FOR SEAT MANUFACTURING

Main detailed design information for seat manufacturing is provided even before any piece of trim or foam is cut or molded:



Foam A-Surface with overbuilds



Flat cover patterns



Wrinkles and bridging gaps



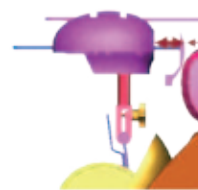
Strains and stresses

APPLICATIONS FOR SEAT TESTING

PAM-COMFORT provides the main design information related to the seat behavior during occupant sitting and riding, well before a physical prototype is built:



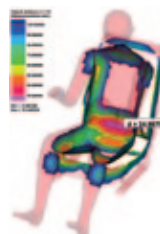
H-Point, thigh and back angles (dummies, human)



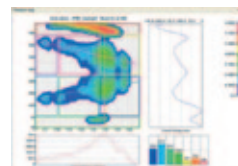
Backset (FMVSS 202a)



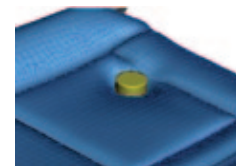
Lumbar Support Prominence with HPMI / ASPECT Dummy



Meat-to-Metal clearance



Seat pressure distribution and comfort score



Indenter loading



Occupied seat transmissibility (dummy, human)

For more information, visit: www.esi-group.com/pam-comfort

岱冠科技有限公司 (ECSC)
Elite Crown Software & Consulting Co., Ltd.
24143 新北市三重區重新路三段122號2樓
TEL / 886-2-89729067
FAX / 886-2-29782023
<http://www.elitecrown.com.tw>

ABOUT ESI GROUP

ESI is a world-leading supplier and pioneer of digital simulation software for prototyping and manufacturing processes that take into account the physics of materials. ESI has developed an extensive suite of coherent, industry-oriented applications to realistically simulate a product's behavior during testing, to fine-tune manufacturing processes in accordance with desired product performance, and to evaluate the environment's impact on product performance. ESI's products represent a unique collaborative and open environment for Simulation-Based Design, enabling virtual prototypes to be improved in a continuous and collaborative manner while eliminating the need for physical prototypes during product development. The company employs over 750 high-level specialists worldwide covering more than 30 countries. ESI Group is listed in compartment C of NYSE Euronext Paris. For further information, visit www.esi-group.com.



EUROPE

CZECH REPUBLIC & EASTERN EUROPEAN COUNTRIES
MECAS ESI s.r.o.
Brojova 213/16
326 00 Pilsen
Czech Republic
T. +420 377 432 931
F. +420 377 432 930

FRANCE ESI France
Parc d'Affaires Silic
99, rue des Solets - BP
80112
94513 Rungis cedex
France
T. +33 (0)1 49 78 28 00
F. +33 (0)1 46 87 72 02

GERMANY ESI GmbH
Sales & Technical
Headquarters
Mergenthalerallee 15-21
D-65760 Eschborn
Germany
T. +49 (0)6196 9583 0
F. +49 (0)6196 9583 111

ITALY ESI Italia srl
Via San Donato 191
40127 Bologna
Italy
T. +39 0516335577
T. +39 0516335578
F. +39 0516335601

SPAIN ESI GROUP HISPANIA, S.L.
Parque Empresarial Arroyo de la Vega
C/ Francisca Delgado,
11 - planta 2º
28108 Alcobendas (Madrid)
Spain
T. +34 91 484 02 56
F. +34 91 484 02 55

SWITZERLAND Calcom ESI SA
Parc Scientifique
EPFL / PSE-A
1015 Lausanne-EPFL
Switzerland
T. +41 21 693 2918
F. +41 21 693 4740

UNITED KINGDOM ESI-UK Ltd.
The Magdalen Centre
Oxford Science Park
Oxford OX 4 4GA
United Kingdom
T. +44 (0) 1865 784 829
F. +44 (0) 1865 784 004

SOUTH AMERICA

SOUTH AMERICA ESI Group South America Ltda.
Rua Artur de Azevedo,
1857 cj. 45
São Paulo - SP 05404-015
Brazil
T./F. +55 11 3062-3698

NORTH AMERICA

USA ESI North America
32605 W 12 Mile Road
Suite 350
Farmington Hills, MI
48334-3379
USA
T. +1 (248) 381-8040
F. +1 (248) 381-8998

USA ESI North America
6767 Old Madison Pike
Suite 600
Huntsville, AL 35806
USA
T. +1 (256) 713-4700
F. +1 (256) 713-4799

ASIA

CHINA ESI-ATE Holdings Limited
Room 16A,
Base Fu Hu Mansion
No. 8 Chaoyangmen
North Avenue
Beijing 100027
China
T. +86 (0) 6554 4907
F. +86 (0) 6554 4911

CHINA ZHONG GUO ESI CO., LTD
Unit 401-404, bldg G,
Guangzhou Soft-Park No.
11, Caipin Road, Guangzhou
Science City (GSC)
Guangzhou 510663
China
T. +86 (020) 3206 8272
F. +86 (020) 3206 8107

INDIA ESI India
Indrakrupa #17, 100 feet
ring road
3rd phase, 6th block,
Banashankari 3rd stage
Bangalore 560 085
India
T. +91 98809 26926
F. +91 80401 74705

JAPAN Nihon ESI K.K.
Headquarters and Sales
Division
5F and 16F Shinjuku Green
Tower Bldg. 6-14-1,
Nishi-Shinjuku
Shinjuku-ku, Tokyo 160-0023
Japan
T. +81 3 6381 8490
F. +81 3 6381 8488

KOREA Hankook ESI
157-033, 5F MISUNG
bldg., 660-6,
Deungchon-3Dong,
Gangseo-ku,
Seoul
South Korea
T. +82 2 3660 4500
F. +82 2 3662 0084

SOUTH-EAST ASIA ESI Group South-East-Asia Office
12A-2, Persiaran Puteri 1
Bandar Puteri Puchong
47000 Puchong, Selangor
Malaysia
T. +603-80607993
F. +603-80607661

ESI Group Headquarters
101 Group
100-102 Avenue de Suffren
75015 Paris
FRANCE
T. +33 (0)1 53 65 14 14
F. +33 (0)1 53 65 14 12